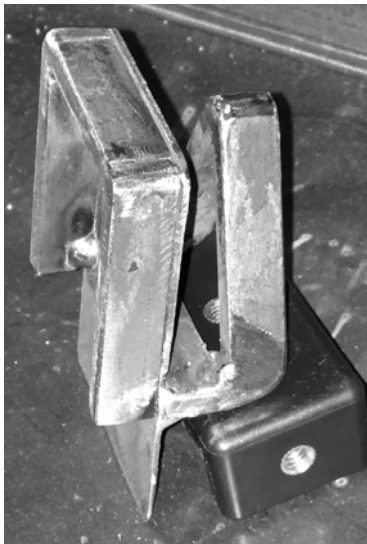


J-20 Clamp-Cell Phone Mount *By Bob O.*

A WHILE BACK, I decided that I needed a cell phone mount for my King Midget. I wanted to hold the phone securely against the dash for easy reading despite the all-too-familiar KM vibrations and road bumps. I desired something that would firmly clamp onto the dash yet would be easily removable and require no drilling or adhesives. Having found no suitable off-the-shelf solution, and being in possession of some metal stock and welding equipment, I resolved to construct one myself.

I found an inexpensive, yet very effective, quick-release phone clamp on amazon.com (“Vastar Universal Cell Phone Tripod Mount Adapter Holder for iPhone/Samsung Galaxy/Nexus”). This clamp is designed to adapt a cell phone to a photo tripod by means of a ¼-20 screw. It works well, and if you don’t mind making holes in your dash it might do the job all by itself.



I cut a piece of 1/16” steel plate about the same width as my phone and long enough to hold the clamp just below the dash. The adapter mounts with a short ¼-20 screw through the back of the plate. Next, I built up a U-shaped “ring” on the front of the plate using ¼ x ½ steel bar to support the back surface of the phone. On the opposite side of the plate, I welded up a spacer and an “A-frame” out of the bar stock. In the apex of the A-frame, I welded a ¼-20 tee nut to accept a ¼-20 x 2” flathead screw.

I drilled a hole in the plate to allow the screw to be installed from the front, then added a plastic knob with a setscrew to the opposite end. The knob allows the user to easily tighten the screw by hand and the flat head of the screw applies the clamping pressure to the back side of the dash. Make sure that setscrew is tight; the first time I tried out my clamp, the knob came off in my hand and had to be reattached before I could remove or loosen the screw. A pair of pads cut from red plumber’s rubber gasket material protect the front and back surfaces of the dash.

I gave my clamp a few coats of semi-gloss paint and have found that it works pretty well. I like to clamp my phone on the right-hand side of the dash; one improvement I plan to make in the next version is to angle the screen towards the driver’s side of the car for a better view. ■

